

Ship's Particulars

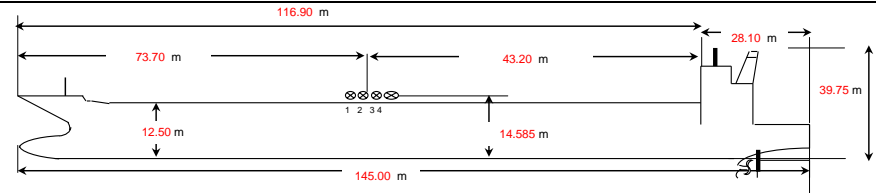
NAME	GOLDEN JASMINE	KEEL LAYING DATE	12/16/2009
IMO NO	9475430	LAUNCH DATE	-
PORT OF REGISTRY	Majuro	DELIVERY DATE	06/30/2012
FLAG	Marshall Islands	SHIPYARD DETAILS	Taizhou Sanfu Shipyard, Co.Ltd.
CALL SIGN	V7BH3	LAST DRY-DOCK DATE	20.11.2022/ YALOVA, TURKEY
OFFICIAL NO	5140	HULL NUMBER	SF 050212
CLASS SOCIETY	Bureau Veritas		
CLASS NOTATION	I, HULL, MACH, Oil tanker ESP, Chemical tanker ESP IMO TYPE 2, Unrestricted navigation, VeriSTAR-HULL, AUT-UMS, MON-SHAFT, CLEANSHIP 1, INWATERSURVEY, SPM, VCS, MANOVR		
P & I CLUB	The West of England Ship Owner's Mutual Insurance Association (Luxembourg)		

SATELLITE COMMUNICATION	
VESSEL E-MAIL	goldenjasmine@amosconnect.com
PHONE (VSAT)/BRIDGE	00441316080672
PHONE (VSAT)/CCR	00441157180008
TLX (SAT-C)	453838717
MMSI NO	538005140
PHONE (FBB)	

REGISTERED OWNERS	CMIC Solar Limited. Room 702, 7/F, Fu Fai Commercial Centre, 27 Hillier Street, Sheung Wan, Hong Kong.
CHARTERERS	PSTV
TECHNICAL OPERATOR	Seacon Ships Management (Europe) S.A. 18, Poseidonos Ave., Kallithea, Athens, Greece, 176 74

PRINCIPAL DIMENSIONS (METRES)	
LOA	145.00 m
LBP	136.44m
BREADTH (Extreme)	23.0m
DEPTH (Molded)	12.50m
HEIGHT (Maximum)	39.75m
BRIDGE FRONT - BOW	116.90m
BRIDGE FRONT - STERN	28.10m

PBL Loaded 72.24 m/ Ballast 60.68 m
 BRIDGE VISIBILITY RESTRICTION Loaded 104.5 m/ Ballast 149.7 m



TONNAGE	REGD	SUEZ	PANAMA
GRT	11,271	11,918.20	
NRT	4,884	9,949.94	9487
Reduced GRT	9,160		

LOAD LINE INFORMATION	FREEBOARD (MM)	DRAFT (M)	DWT (MT)
TROPICAL	3.532	8.983	17300.000
SUMMER	3.715	8.800	16768.000
WINTER	3.898	8.617	16278.000
LIGHTSHIP	7.99	4.51	5309.740
NORMAL BALLAST COND	7.001	5.499	8015.450
SEG. BALLAST COND			45.3
FWA		197 MM	
TPC @ Summer draft		28.04 MT	

TANK CAPACITIES (cbm) (Filling restrictions: SG - 1.025 @ 98% & SG - 1.300 @ 78%)			
CARGO TANKS (98 %)		F.W. TANKS (100%)	
COT 1 P/S	1182.664 / 1182.664	NO.1 F.W.T. (P)	121.5
COT 2 P/S	1752.612 / 1753.612	NO.2 F.W.T. (S)	121.5
COT 3 P/S	1811.530 / 1811.530		
COT 4 P/S	1811.530 / 1811.530	TOTAL	243
COT 5 P/S	1769.488 / 1769.488	Technical Water Tanks 100%	
COT 6 P/S	910.890 / 910.890	No.1 T.W.T(P)	151.7
SLOP PORT	265.943	No.2 T.W.T (P)	151.7
SLOP STBD	150.744		
TOTAL	19011.3	TOTAL	303.4
OTHER DETAILS			TOTAL
H. Level Alarm	95%	INDEPENDENT	RESIDUAL TANK (98%):
Overfill Alarm	98%		
			7421.63

MACHINERY / PROPELLER / RUDDER	
MAIN ENGINE MAKE & MODEL	STX (B&W) 6S35MC
M.C.R.	4440 KW @ 173 RPM
SERVICE RATING	3996 KW @ 167 RPM
CRITICAL RANGE	89-107 RMP
AUX. BOILER (2 sets)	1 Oil Fired Auxiliary boiler,170 m², 7 bar 1 Oil and gas fired Auxiliary boiler,183 m², 7 bar
GENERATOR (3 sets)	188DHMG Engine - 6CT8.3-2(M)
EMER. D.G. (1)	Shanghai- 188DHMG0923
PROPELLER	Right Hand, 4 Blade, Fixed Pitch
RUDDER	Streamline Semi Spade
STEERING GEAR	2 RAM / 4 Cyliner
FW GENERATOR CAP	13 MT/Day
Bow Thruster	680.00 bhp

BUNKER TKS 100% - M3	
FO 1 PORT	144.66
FO 2 PORT	123.55
FO 2 STBD	123.55
HS FO SETT TK	27.15
HS FO DAY TK	20.25
LS FO DAY TK	20.25
LS FO SETT TK	30.62
DO TK S	28.46
DO SETT TK	12.70
DO DAY TK	18.90
DO NO.1 STBD	144.66
DO TK P	28.46

WINCHES / WINDLASS / ROPES / EMERGENCY TOWING			
	FWD	AFT	PARTICULARS
WINCHES	2	2	Hydraulic / 10 Ts Heaving 15 m / min
ROPES	4	4	Polypropelene, 60mm-220m.
WINCH BRC			BHC - 30 T
WINDLASS	2		Hydraulic / 56 mm Chain / 15.0 T Heaving 9 m/min
FIRE WIRE	1	1	28 mm Wire / Length - 60 m / 54 T BS
ANCHOR	2		Port-10 Skls / Stbd-11 Shkls, Wt 5.25 Tons
EMG. TOWING	1		Bow Chain Stopper Tongue
			SWL 200 T / 56 mm Chain

CARGO AND BALLAST PUMPING SYSTEM- FRAMO				
MAIN PUMPS	NOS.	CAPACITY	HEAD	L/MIN/BAR
CARGO PUMPS	12	300 m3 / Hr	88 m	259/213
CARGO PUMPS	2	89 m3/HR	88 m	97/204
DRAIN TANK PUMP	1	89 m3/HR	88 m	97/204
PORTABLE P/P	1	70 m3/Hr	70 m	69/201
BALLAST PUMPS	2	250 m3/ Hr	20 m	113/206
FPK BALLAST PUMP	1	150 m3/Hr		- / 0.2 BAR
BILGE & GS PUMP	1	190 m3/Hr	10.07	63 KW
FIRE & GS PUMP	1	190 m3/Hr	10.07	63 KW
EMERGENCY FIRE PUMP	1	60 m3/Hr	90 MLC	25.5 KW
TWP (FRESH WATER)	2	100 m3/Hr	-	132 / 150
TWP (SEA WATER)	1	150 m3/Hr	-	132/197

CARGO HOSE HANDLING CRANE

10 T X 14.5 M

IG / VAPOUR EMISSION / VENTING

IG MAKE & CAPACITY	& 2849 M3/HR EACH
P/V VALVE PR./ VAC. SETTING	1400 mm / -350 mm WG
P/V BREAKER PR./VAC. SETTING	2400 mm / -700 mm WG

LIFE BOATS

Free fall 1 x 25person

RESCUE BOATS

1 X 6 Persons

LIFE RAFTS

2 x 25 P + 1 x 6 P

PROV. CRANE (Port)

1.2 T

ENGINE ROOM CRANE

2 T

Minimum Bow Draft: 4.5 M

Ballast Draft: 5.5

MARPOL Trim: 2.05 M

Propeller Immersion: 4.4 M

MANIFOLD ARRANGEMENT (400 mm / Steel)

Distance of cargo manifold to cargo manifold	1500 MM
Distance of cargo manifold to vapour return manifold	3000 MM
Distance of manifolds to ship's rail	4600 MM
Distance of spill tray grating to centre of manifold	900 MM
Distance of main deck to centre of manifold	2085 MM
Distance of main deck to top of rail	1015 MM
Distance of top of rail to centre of manifold	1700 MM
Distance of manifold to ship's side	4350 MM
Distance of centre of manifolds to Bridg	44800 MM
Distance of manifold from keel	4671 MM
Length of Portable Gangway (Wharf Ladder)	10 MT

FIRE FIGHTING SYSTEM

ENGINE ROOM : Fixed Co2 System / Water mist System

PUMP ROOM : NA

CARGO & DECK AREA : Low expansion foam extinguishing